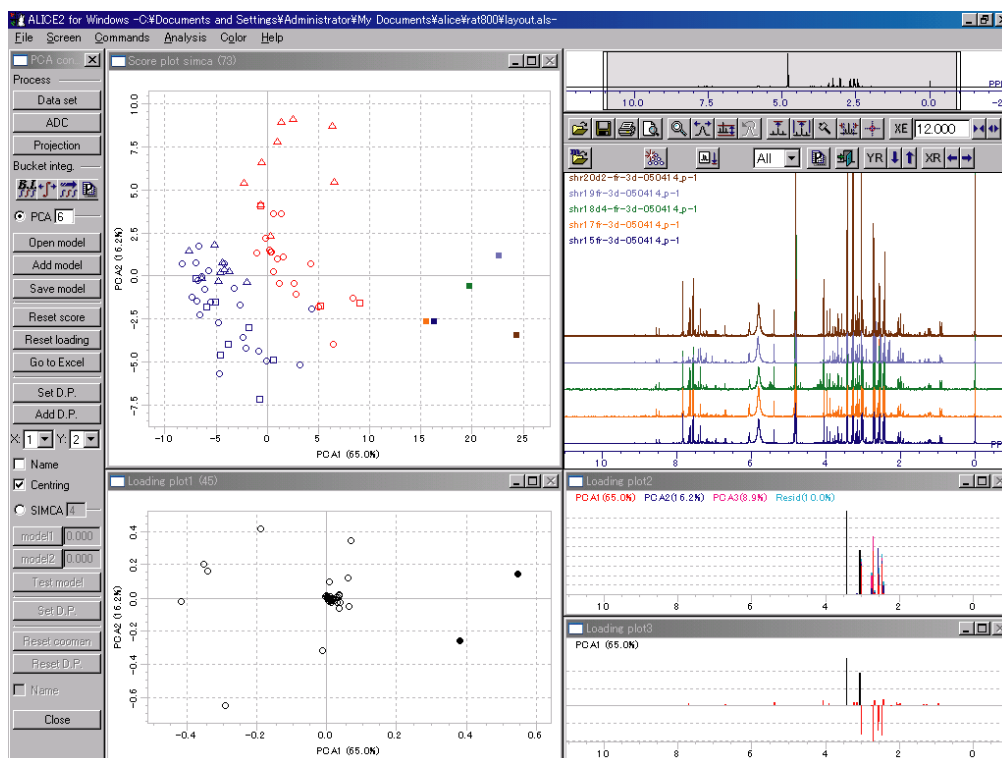


# NMR Metabolome #2: Integrated environment for metabolome analysis

**Alice 2 for Metabolome** is a software specially designed for NMR metabolome. It can intuitively be used for NMR data processing and multi-variate analysis.

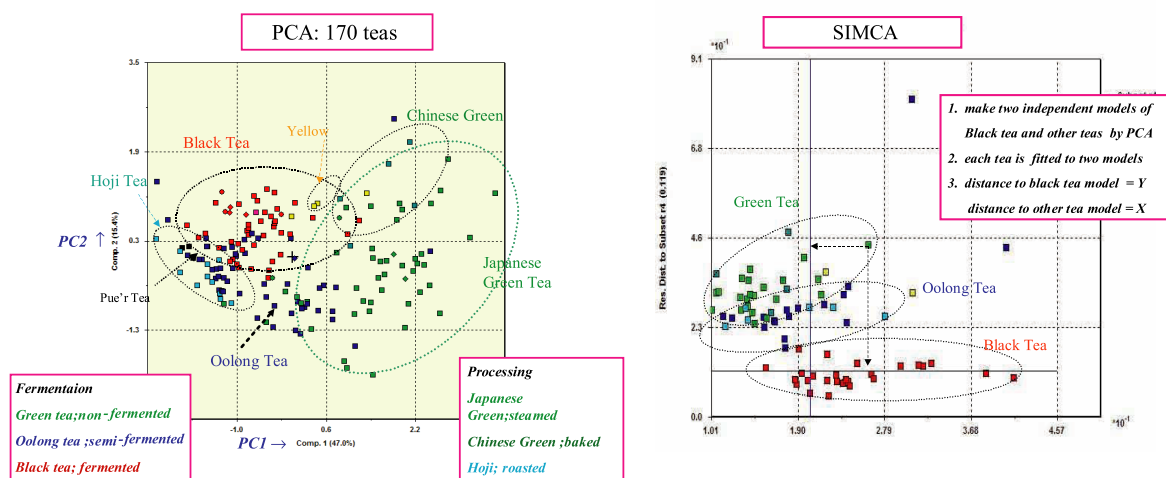
## -- Interface of Alice 2 for Metabolome --



In conjunction with spectral data (upper right), users can carry on principal component analysis (PCA, upper left), loading plot (lower left), and finding marker variables (lower right).

※ **Alice 2 for Metabolome** was developed in the collaboration with Dr. K. Hirakawa of Nippon Medical School.

## -- Results of PCA and SIMCA analysis of tea --



Multi-variate analysis was applied to over 170 kinds of green tea, black tea, and Chinese tea. The resultant categorization suggests the different degrees of fermentation.