

A Compilation of NMR Data under a Series of Magnetic Fields

Spectrometer: JNM-ECA / ECX

Magnetic Field (^1H resonance frequency):

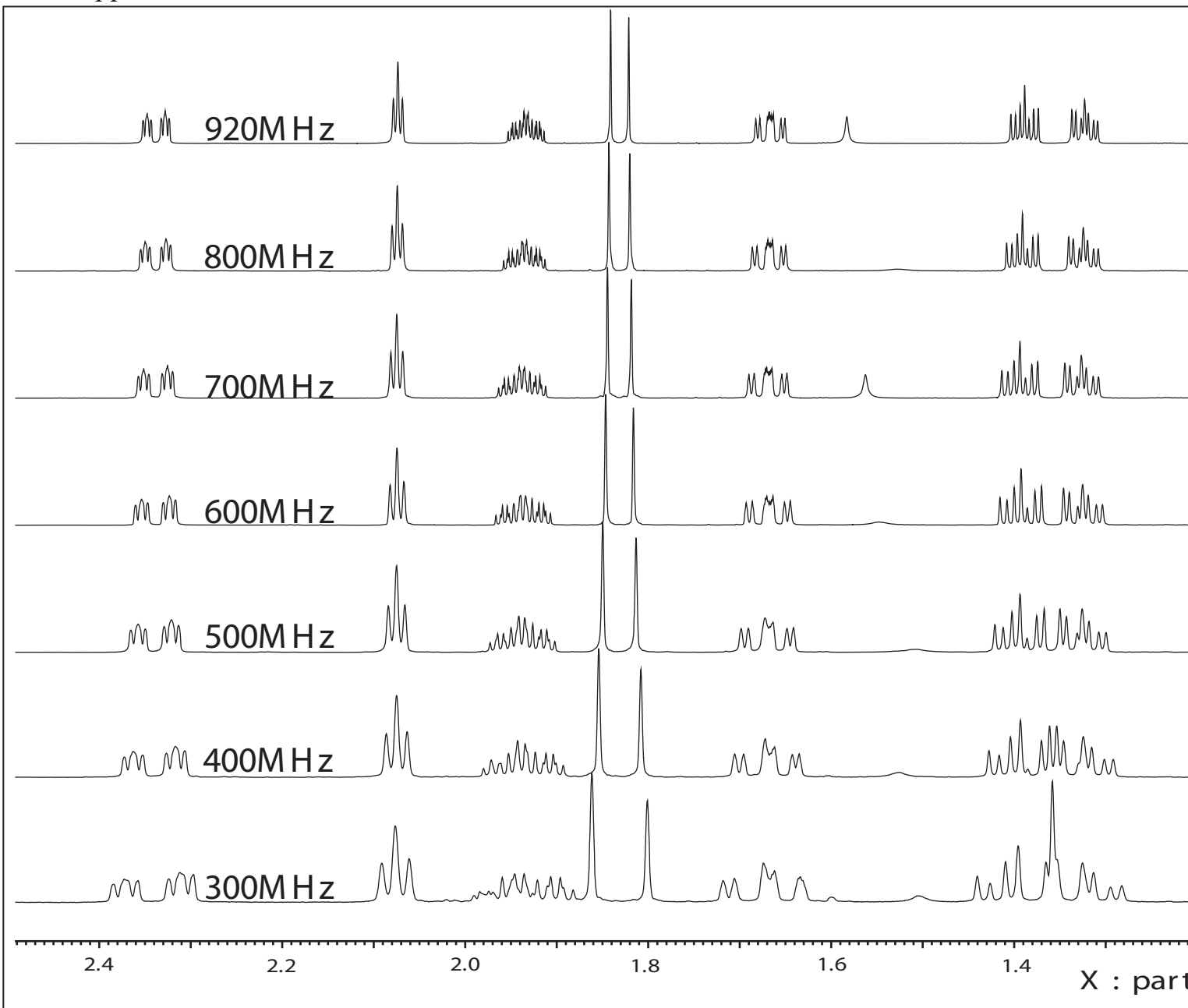
7.05 T (300 MHz), 9.39 T (400 MHz), 11.74 T (500 MHz), 14.09 T (600 MHz),
16.44 T (700 MHz), 18.79 T (800 MHz), 21.6 T (920 MHz)

Observed Nuclei: ^1H

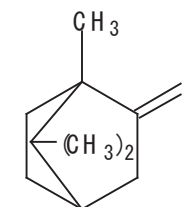
Sample:

Camphor (mol. wt.: 152.23)
Cholesterol (mol. wt.: 386.64)
Menthol (mol. wt.: 156.26)
Sucrose (mol. wt.: 342.30)
Raffinose (mol. wt.: 504.46)
Gramicidine S (mol. wt.: 1141.49)





Sample : Camphor
 Solvent : CDCl₃
 Scans : 8scans
 Concentration : 5mg/0.6ml





920M Hz

Sample : Cholesterol
 Solvent : CDCl₃
 Scans : 8scans
 Concentration : 5mg/0.6ml

800M Hz

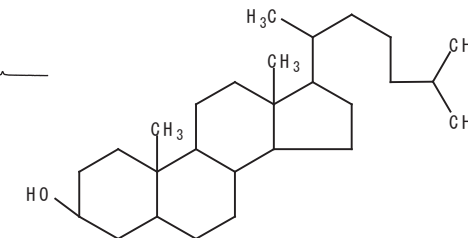
700M Hz

600M Hz

500M Hz

400M Hz

300M Hz



2.5

2.0

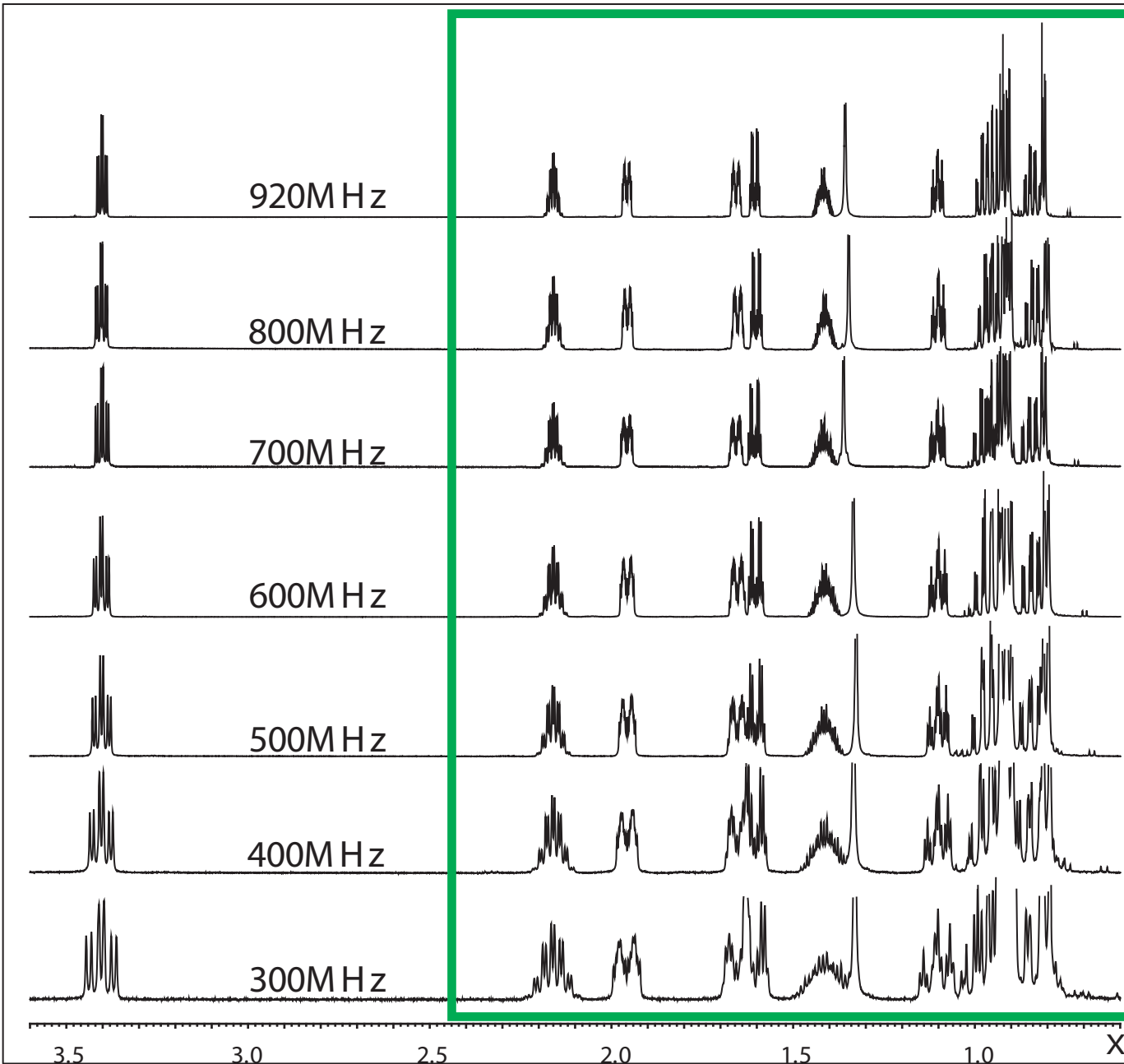
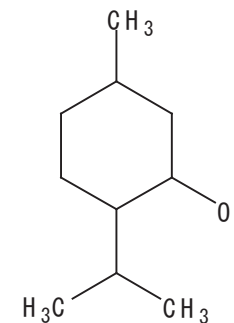
1.5

1.0

X : parts per Million : ¹H

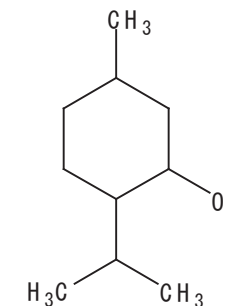
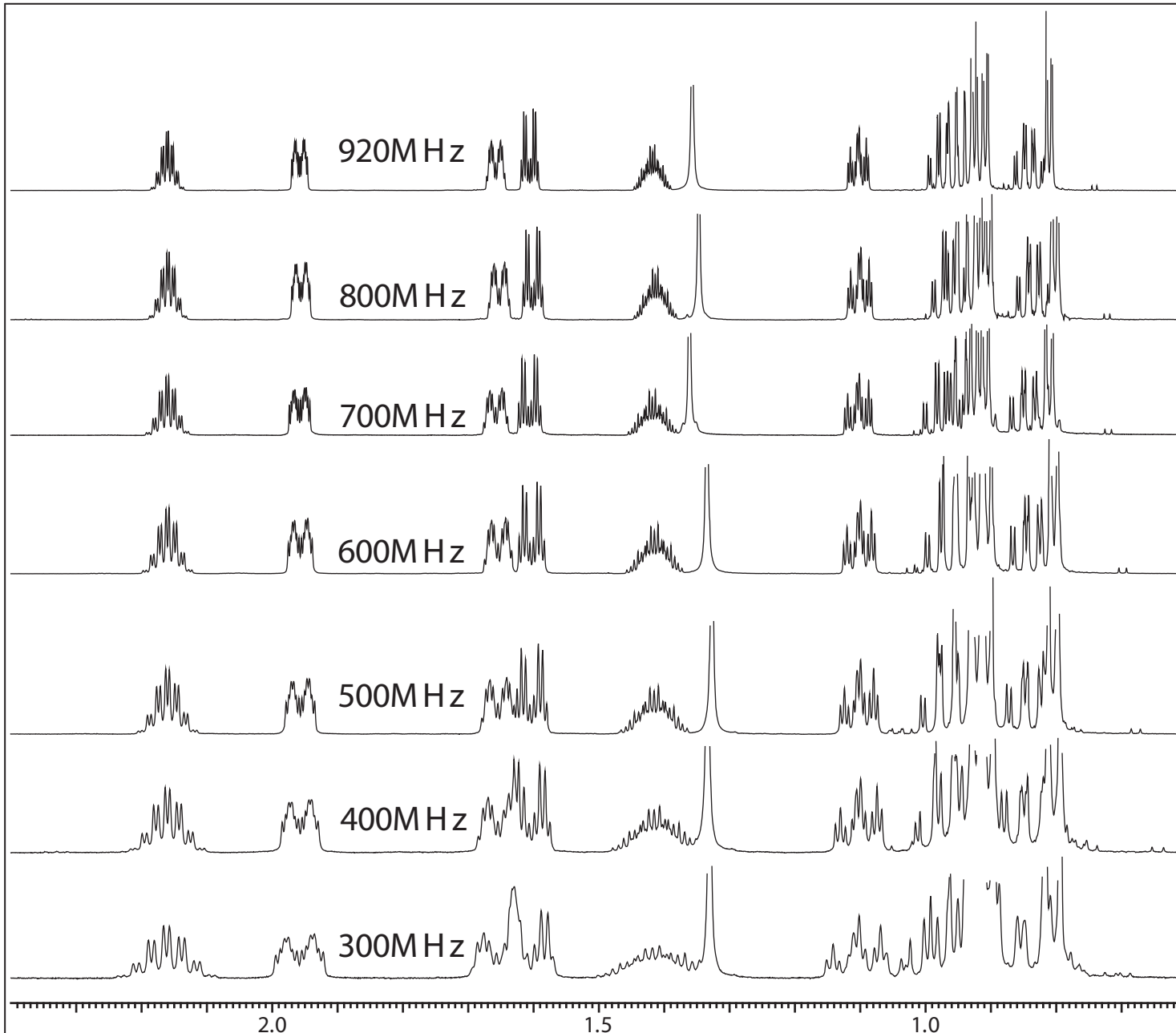


Sample : Menthol
 Solvent : CDCl₃
 Scans : 8scans
 Concentration : 5mg/0.6ml



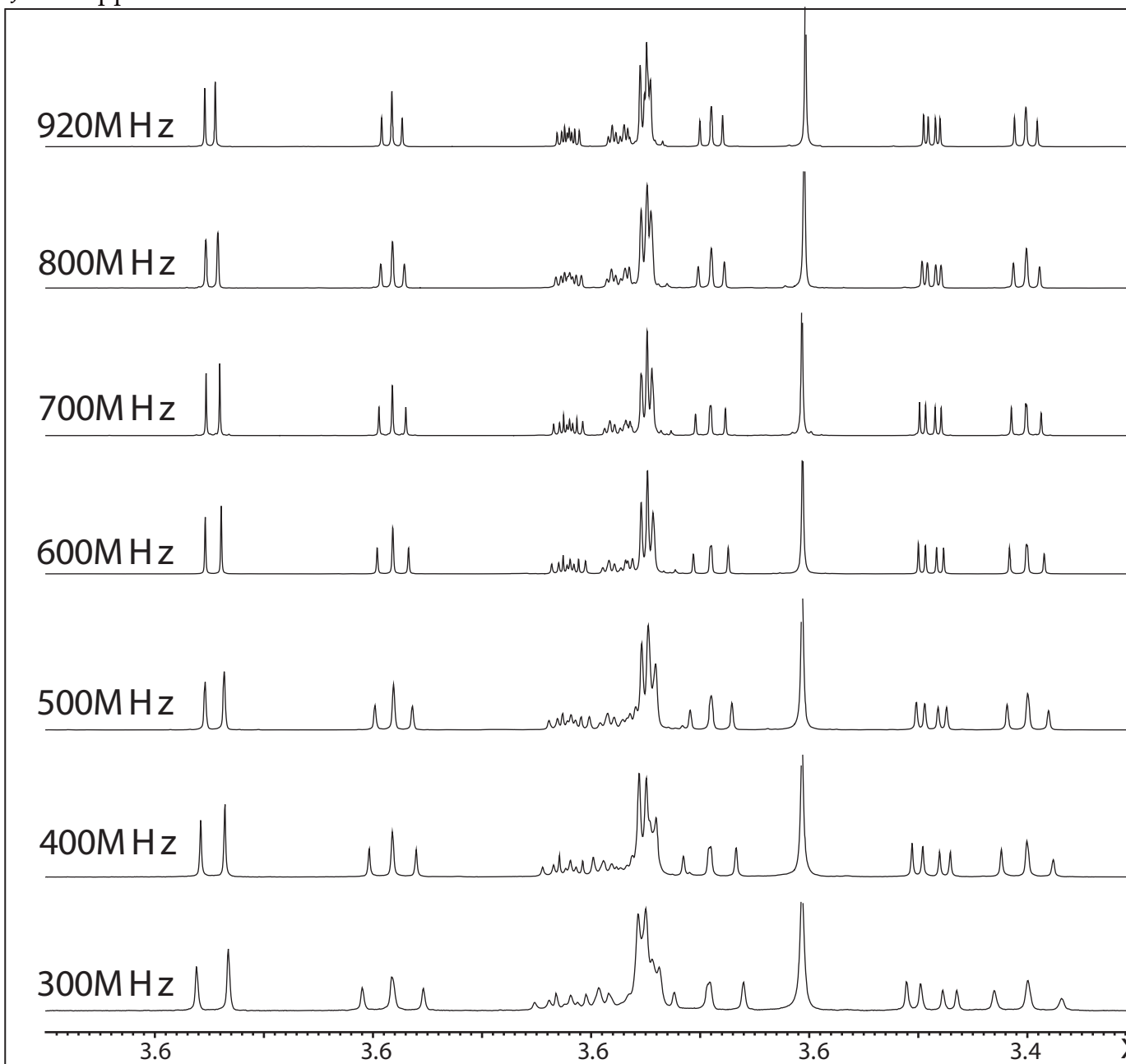
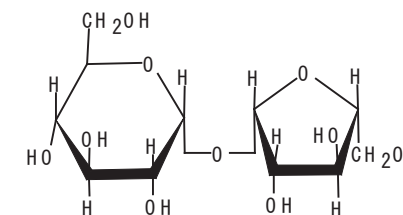


Sample : Menthol
 Solvent : CDCl₃
 Scans : 8scans
 Concentration : 5mg/0.6ml



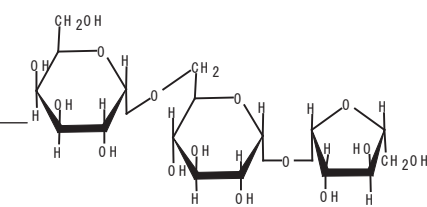
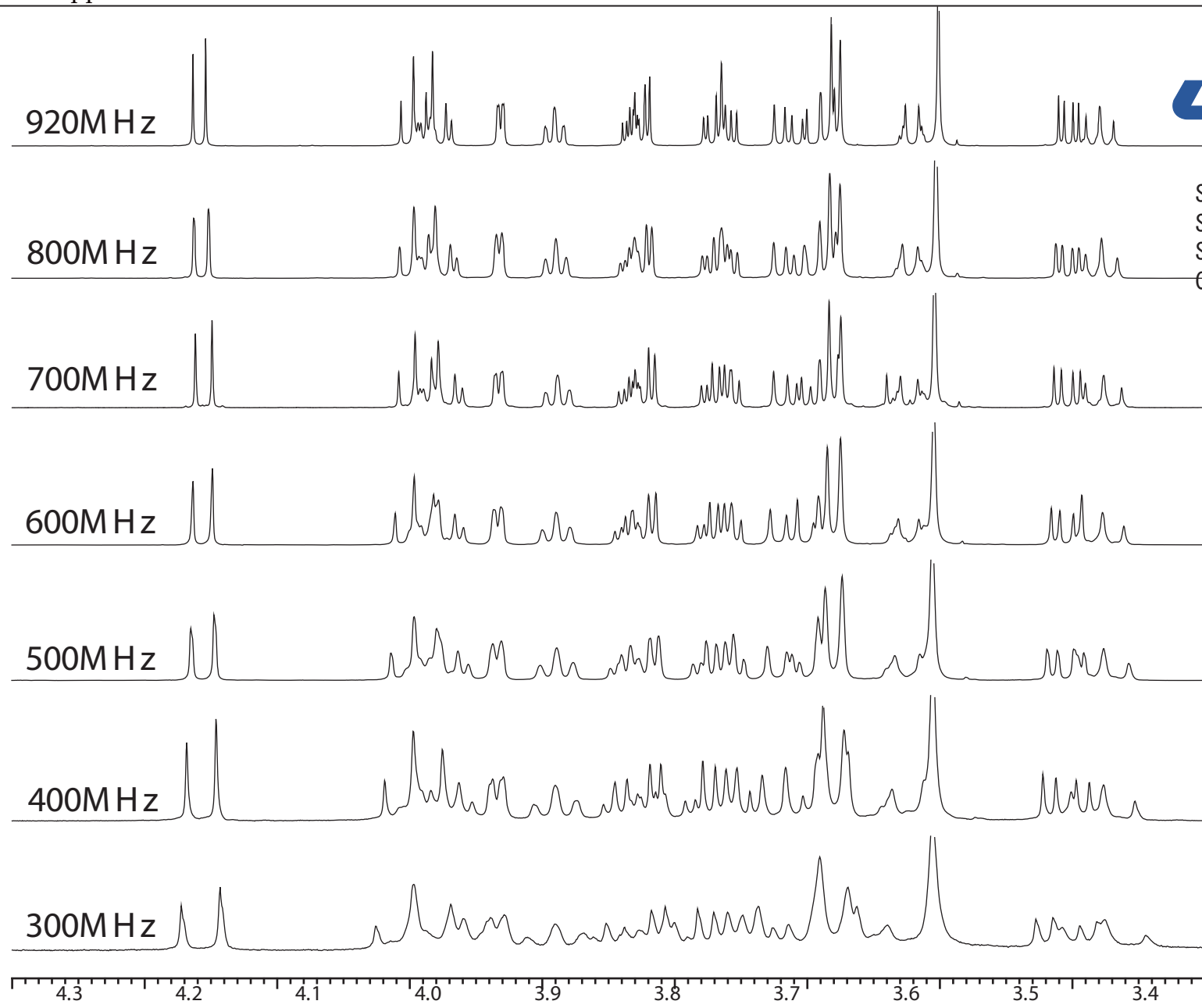


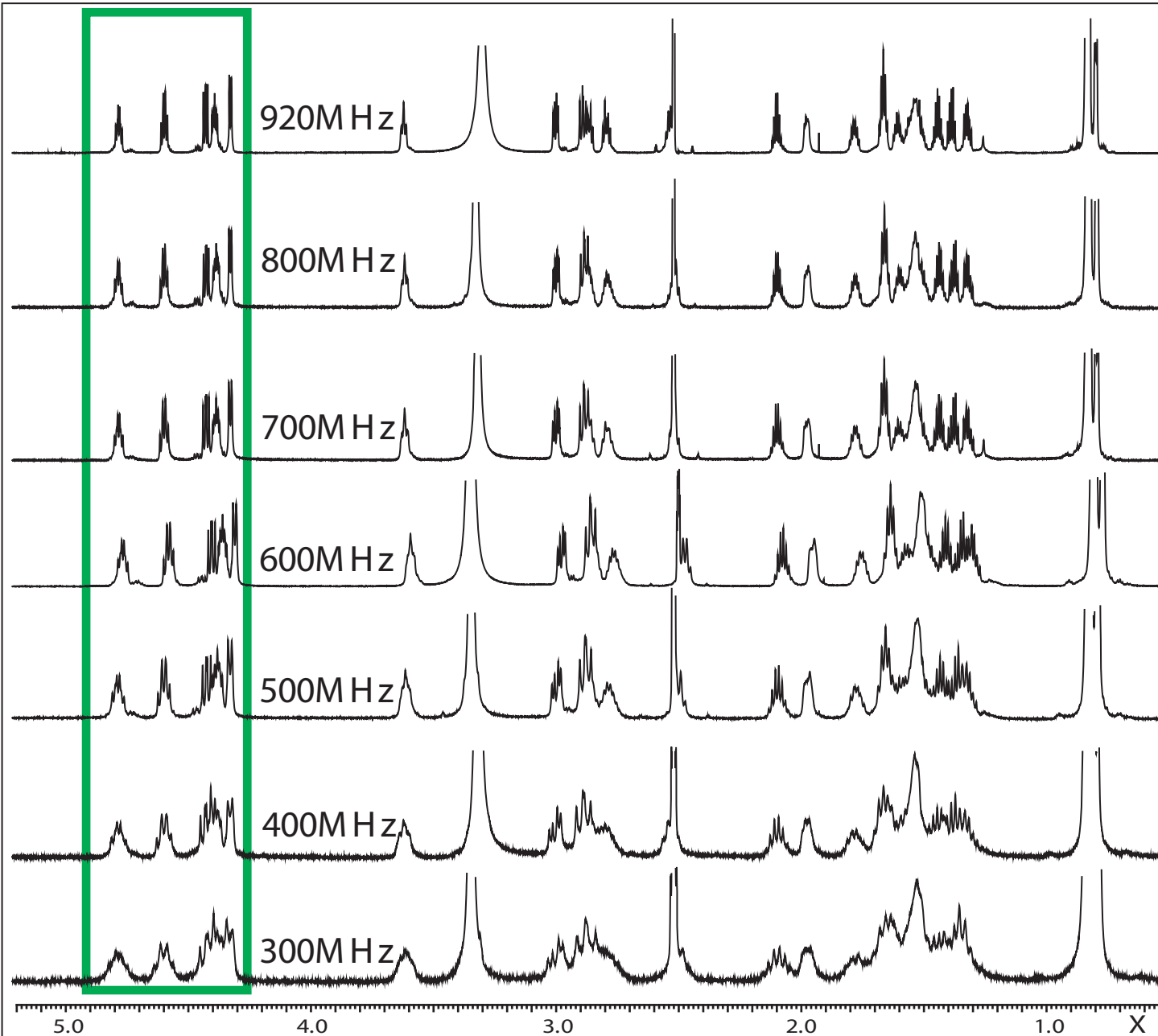
Sample : Sucrose
 Solvent : D₂O
 Scans : 8scans
 Concentration : 4mg/0.6ml



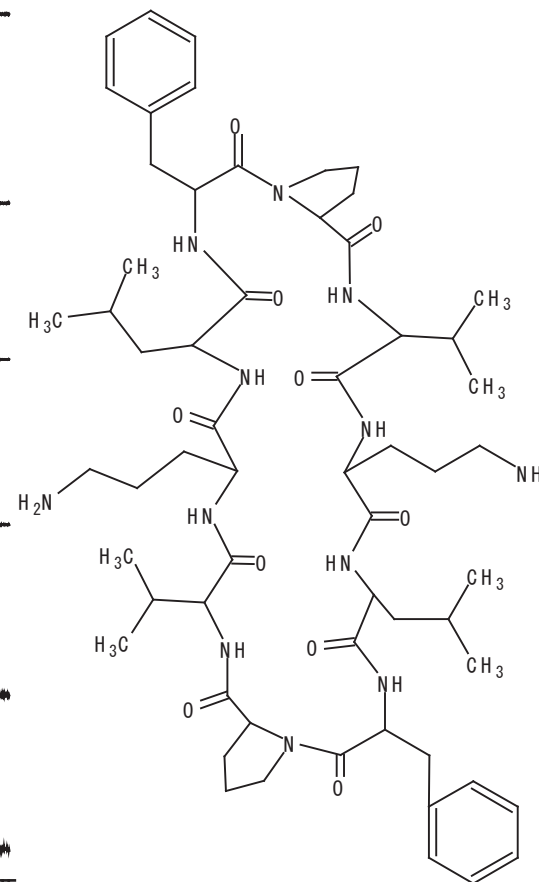


Sample : raffinose
 Solvent : D₂O
 Scans : 8scans
 Concentration : 4mg/0.6ml



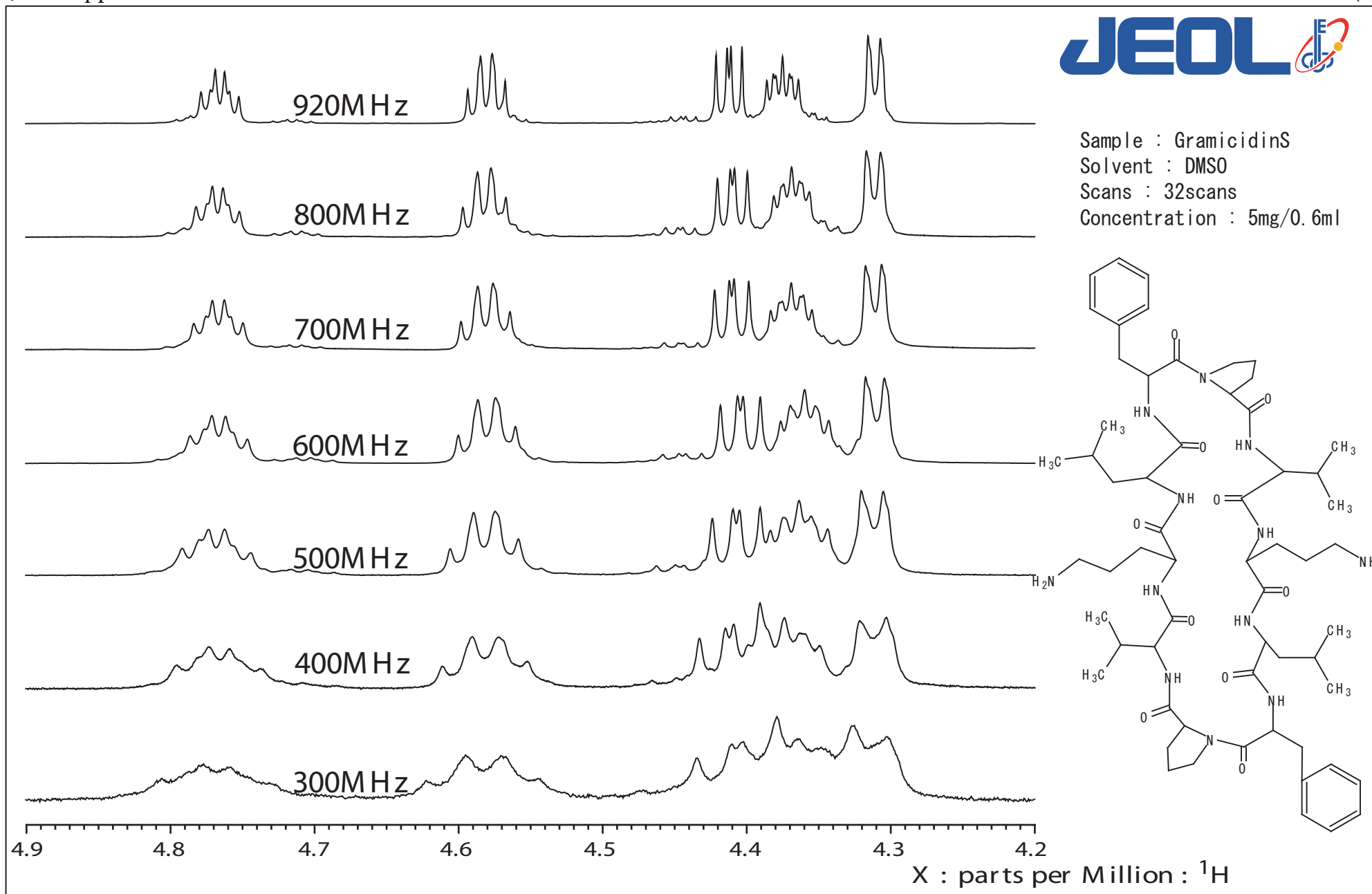


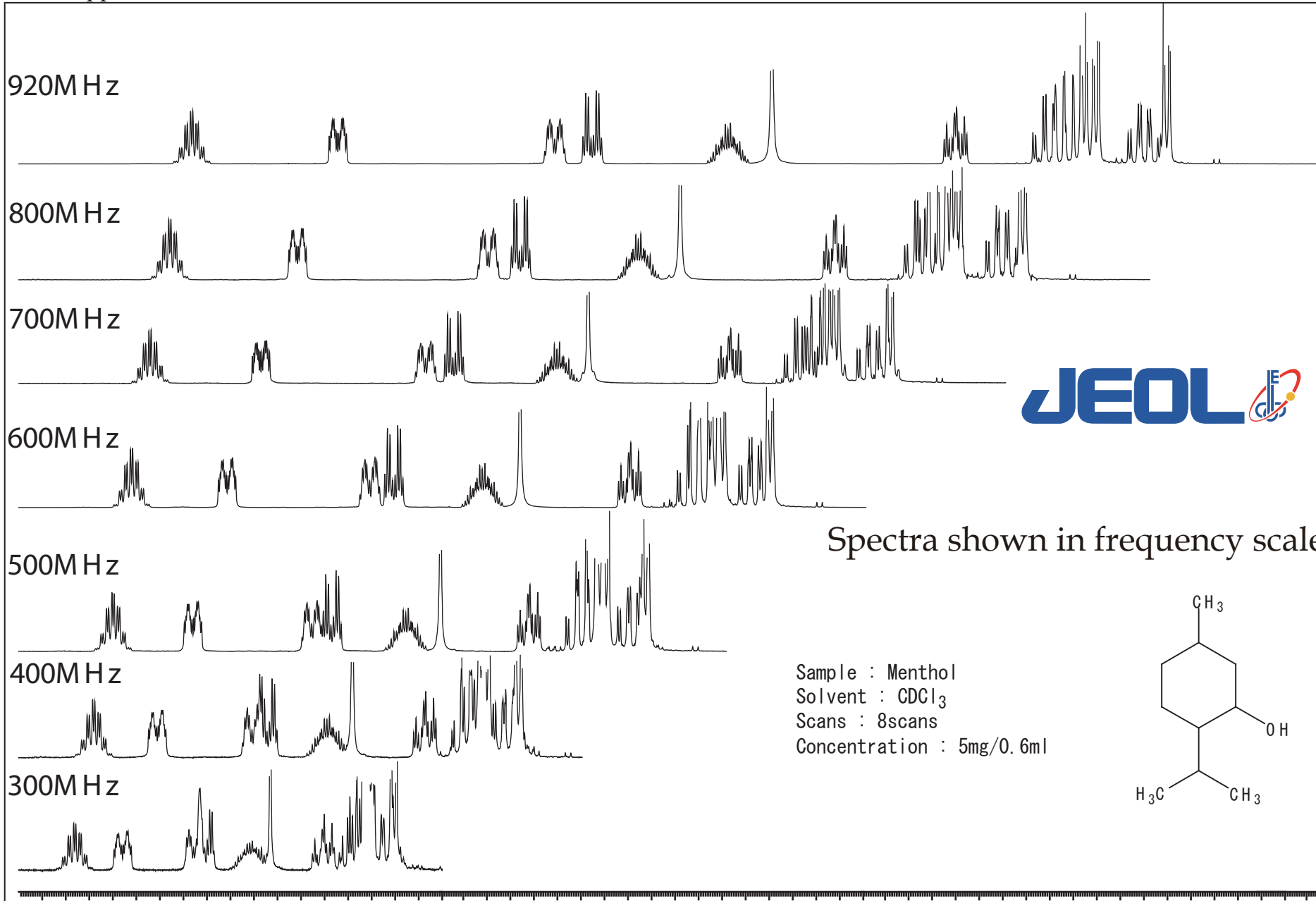
Sample : GramicidinS
 Solvent : DMSO
 Scans : 32scans
 Concentration : 5mg/0.6ml





Sample : GramicidinS
 Solvent : DMSO
 Scans : 32scans
 Concentration : 5mg/0.6ml





Spectra shown in frequency scale

Sample : Menthol
 Solvent : CDCl₃
 Scans : 8scans
 Concentration : 5mg/0.6ml

